

21329

21329 NORDHOFF

CHATSWORTH | CALIFORNIA

SCOTT CASWELL, SIOR

Principal
818.266.7772
scaswell@lee-re.com
DRE 00853607

ERICA BALIN

Managing Director
818.444.4912
ebalin@lee-re.com
DRE 01481476

No warranty or representation is made to the accuracy of the foregoing information. Terms of sale or lease and availability are subject to change or withdrawal without notice. CID #01191898



COMMERCIAL REAL ESTATE SERVICES



THE OFFERING

Explore an exceptional opportunity in the heart of Chatsworth, CA and join other personal care product companies!

Located on a bustling main street, this impressive free-standing building spans approximately 53,000 square feet, meticulously crafted to meet the demands of cosmetic design and manufacturing boasting both Original Design Manufacturing (ODM) and Original Equipment Manufacturing (OEM) capabilities, this facility offers a seamless blend of functionality and flexibility. With 100% HVAC coverage, your production processes are safeguarded against temperature fluctuations, ensuring consistent quality year-round.

Elevate employee comfort with dedicated amenities including a spacious lunchroom and multiple restrooms featuring generous stalls. Efficiency is key with both dock-high and ground-level loading options, facilitating streamlined logistics for your operations. Don't miss your chance to thrive in Chatsworth's dynamic business landscape as the entrance to the Northpark Industrial Center.



MAIN STREET
FRONTAGE



2,000A | 277/480V
POWER



±53,093 SF



NEW ROOF (2023)



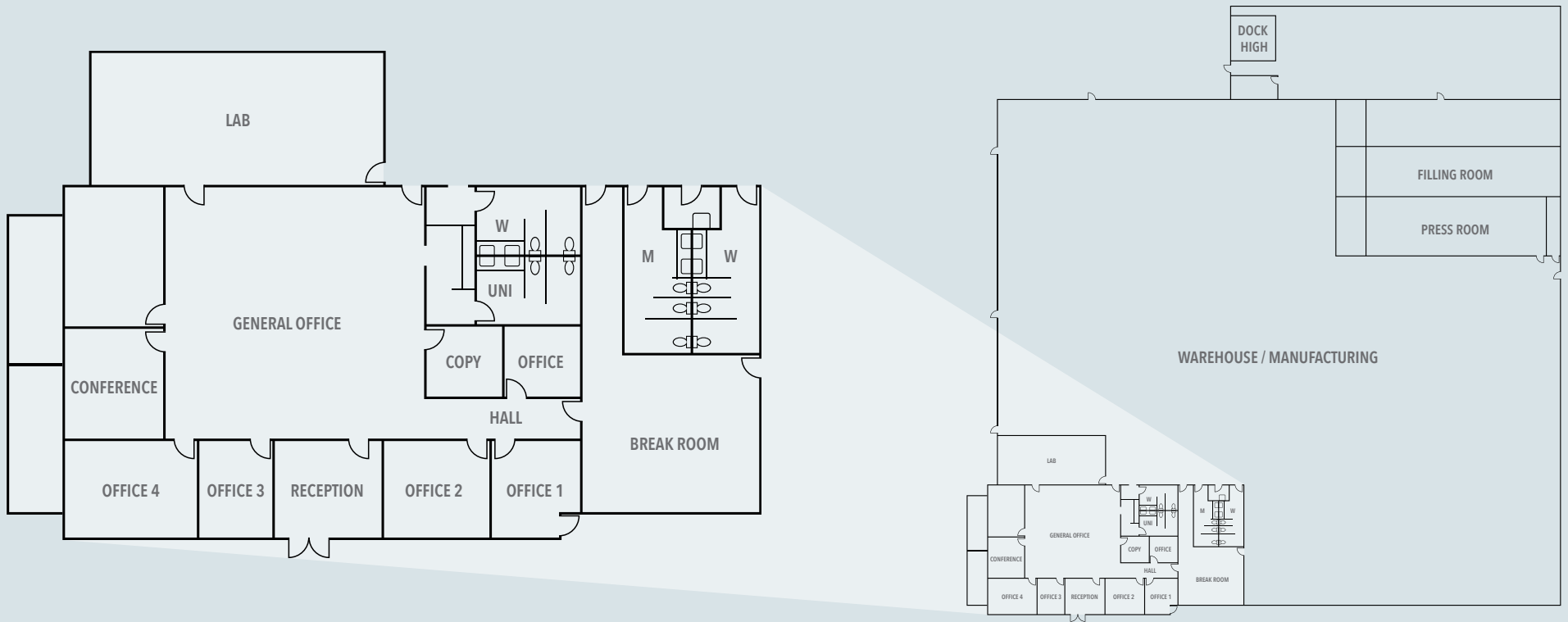
100% HVAC



DOCK HIGH &
GROUND LEVELS



TURNKEY
PRODUCTION FACILITY



21329 NORDHOFF







SCOTT CASWELL, SIOR

Principal
818.266.7772
scaswell@lee-re.com
DRE 00853607

ERICA BALIN

Managing Director
818.444.4912
ebalin@lee-re.com
DRE 01481476



COMMERCIAL REAL ESTATE SERVICES

No warranty or representation is made to the accuracy of the foregoing information. Terms of sale or lease and availability are subject to change or withdrawal without notice. CID #01191898